

OPERATION and MAINTENANCE INSTRUCTION MANUAL

AEU-16C TORQUE PLUS+ Electric Lab Motor System



P.O. Box 1548 • Woodinville, WA 98072 • 8333 216th Street SE, Woodinville WA 98072
International (425) 487-3157 • Toll Free (800) 426-5913
www.aseptico.com • info@aseptico.com

TABLE OF CONTENTS:

Introduction	1
Package Contents	1
Setting Up the Unit	2
Operation Functions	3
Operation	4
Sterilization & Maintenance	5
Changing Motor Brushes	6
Symbol Definitions	7
Troubleshooting	8
Warranty	Back Cover

SPECIFICATIONS:

Console Size:	5.75" x 6" x 2.75" (14.5 cm x 15.25 cm x 7 cm)
Console Weight:	4 lbs (1.8 kg)
Power Source:	110-120V, 60Hz or 220-250V, 50Hz
Max. Power Consumption:	190 W

ENVIRONMENTAL CONDITIONS:

Designed for indoor use only.

Altitude up to 2000 m.

Temperature range of 5° C to 40° C

Maximum relative humidity 80%.

Transient overvoltage according to Installation Category II.

Pollution Degree 2.



P.O. Box 1548 • Woodinville, WA 98072
8333 216th Street SE • Woodinville WA 98072
International (425) 487-3157
Toll Free (800) 426-5913
www.aseptico.com • info@aseptico.com



Advena Ltd
Pure Offices
Plato Close
Warwick
CV34 6WE
UK



LABORATORY EQUIPMENT
38AJ

Your new Aseptico AEU-16C TORQUE PLUS+ Electric Lab Motor System is one of the finest motor/handpiece combinations available to the professional. It is well suited for many uses in the dental lab, including dental prosthesis and other applicable dental laboratory work.

Congratulations!

This system is engineered to provide many years of reliable service. Please read the instructions provided in this manual to receive the best and longest service from your Aseptico equipment.

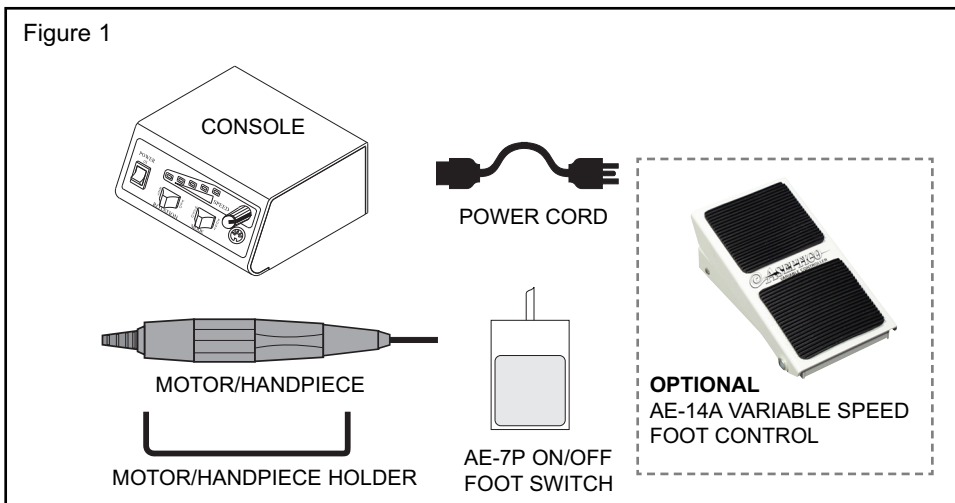
Separate manuals may be provided to cover the operation and maintenance of handpieces or other accessories for your unit.

PACKAGE CONTENTS:

- Electric Control Console
- Remote Power Cord
- Motor/Handpiece Combo
- Autoclavable Motor Holder
- AE-7P On/Off Foot Switch

SETTING UP THE UNIT:

1. Unpack the console and check that the voltage is proper for the country of use. Use 110V unit for 110-120V 60Hz voltages, and 220V unit for 220-250V 50Hz voltages. For alternative voltages (220V- 250V), confirm that the type of plug cap is correct for the country of usage and carries the proper certification markings. Correct cord is shipped with the console.
2. Attach the remote power cord to the back of the console and plug into a grounded electrical receptacle.
3. Connect the motor to the receptacle on the lower front panel of the console.
4. Insert a bur or bit into the handpiece collet. *Do not operate the unit without a bur or blank installed in the collet.*
5. Attach the supplied AE-7P On/Off Foot Switch to the connector on the back of the unit marked 'Foot Switch'. An optional variable-speed foot control may be used instead of the On/Off Foot Switch.



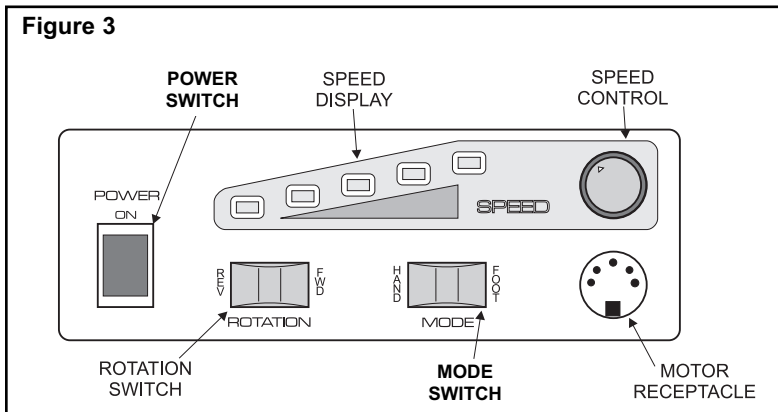
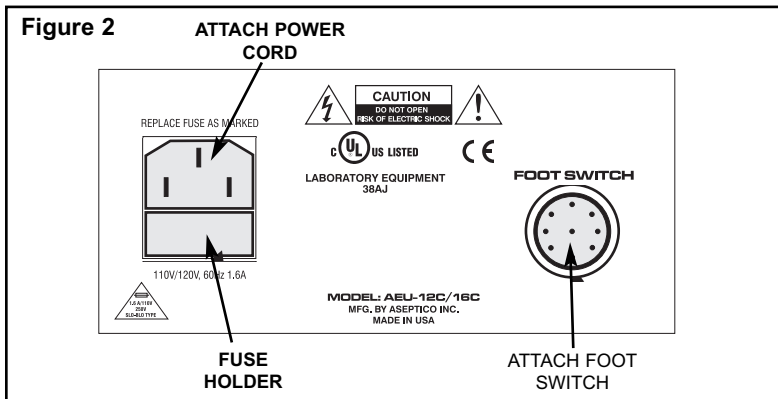
OPERATION FUNCTIONS:

- 1. Power Switch** - Controls power on/off to console. When turned on, console should light up.
- 2. Speed Control** - Controls the motor/handpiece speed. Turn clockwise for increased speed, counterclockwise for decreased speed. The L.E.D. speed display indicates relative speed from minimum to a maximum of 35,000 RPM.
- 3. Mode Switch** - Sets the unit to activate from foot switch or from power switch. If using the foot switch, set the mode to 'FOOT'. Set the mode to 'HAND' to activate whenever the power switch is on.
- 4. Rotation Switch** - Selects clockwise or counter-clockwise rotation of the bur. Set the rotation to 'FWD' for normal clockwise operation and to 'REV' for counterclockwise operation.
- 5. Optional Foot Switch** - Controls the on/off activation of the motor/handpiece. Variable-speed foot switches are also available. Plug the foot switch into the foot switch receptacle on the back of the console and select 'FOOT' mode for proper operation.

OPERATION:

After the unit has been set up and you have made yourself familiar with the operation functions, you are ready for operation as follows:

1. Turn the power switch on the lower left front of the console to the 'ON' position. The front panel display will light.
2. Set the Mode and Rotation as desired.
3. Turn the Speed Control knob until the desired operating speed is shown on the Speed Display.
4. When mode is set to 'HAND', unit will begin operation when power is on. When mode is set to 'FOOT', press down on the Foot Control to begin handpiece operation.



STERILIZATION & MAINTENANCE:

CONSOLE- The exterior of the console may be cleaned by wiping with a soft cloth moistened with mild detergent or disinfecting solution.

MOTOR/HANDPIECE- The included motor/handpiece assembly is NOT autoclavable.



WARNING:

- Do not attempt to disassemble the motor or motor connector.
- Do not oil or lubricate the motor.
- Do not attach a handpiece to the motor while the motor is running.
- Do not bend motor cord sharply.

Failure to comply with any of the above instructions may void your warranty

Changing Motor Brushes:

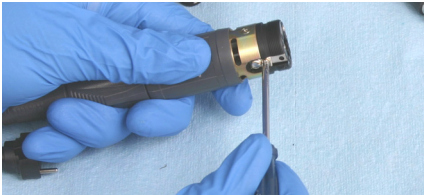
1. Unscrew the motor end.



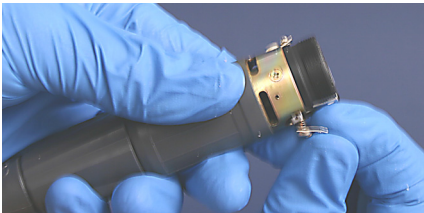
2. Pull the plug out of motor end.



3. Unscrew the motor brushes.



4. Replace Brushes and align as shown.



5. Replace plug and screw on end cap.



SYMBOL DEFINITIONS:



Attention, consult
accompanying documents



Dangerous Voltage

SN

Serial Number



Speed (revolutions) Increase



Protective earth (ground)

TROUBLESHOOTING:

Problem	Correction
Console does not light when turned on.	Check console to power connection. Check that voltage selector is set for the proper voltage. Check fuse. If blown, replace with 1A/250V slo-blo fuse for 110 volts, & .5 A/250V slo-blo fuse for 220 volts.
Console lights when turned on, but handpiece does not turn.	Check motor plug connection. Increase RPM. Check that a bur is properly seated in the handpiece and the collet is closed. If foot switch is equipped, check foot switch connection and depress foot switch.
Improper display.	Turn power switch off, wait 5 seconds, then turn back on to reset.

WARRANTY

Aseptico warrants its products against defects in material or workmanship for a period of two (2) years, from date of original invoice. Some handpieces are warranted for one year under the same conditions. Other handpieces and expendable components, such as air turbines and light bulbs, are covered by shorter warranty periods, or have no warranty. Aseptico's sole obligation under product warranty is (at its sole option and discretion) to repair or replace any defective component or product in part or whole. Aseptico shall be the sole arbiter of such action.

In the event of alleged defect under warranty, the purchaser is to notify Aseptico's Customer Service Department promptly. Customer Service will provide instructions, usually directing that the product be returned for service. Shipment to Aseptico and the cost thereof is always the responsibility of the purchaser.

Accidental misuse, inappropriate installation, or failure to perform directed maintenance voids the warranty. Deliberately defacing, modifying, or removing the serial number voids the warranty.

Aseptico does not assume, under this warranty, any risks or liabilities arising from the clinical use of its products, whether or not such use involves coincidental utilization of products manufactured by others.



P/N: 420293
Rev. F
ECO 13452
09/2014

P.O. Box 1548 • Woodinville, WA 98072
8333 216th Street SE • Woodinville WA 98072
International (425) 487-3157 • Toll Free (800) 426-5913
www.aseptico.com • info@aseptico.com

PRINTED
IN THE
U.S.A.