

# OPERATION AND MAINTENANCE MANUAL

## Portable Dental Stool

Item ADC-08-RED



**Aseptico®**

*P.O. Box 1548 • Woodinville, WA 98072-1548  
1-800-426-5913 • 425-487-3157 • Fax: 360-668-8722  
email: [info@aseptico.com](mailto:info@aseptico.com) • Internet: [www.aseptico.com](http://www.aseptico.com)*

**TABLE OF CONTENTS**

**Introduction** .....3  
    Purpose .....3  
    Performance Characteristics .....3  
    Items Furnished .....3  
**Operation Instructions** .....4  
    Stool Set-Up .....4  
    Collapsing the Stool .....4  
**Cleaning & Maintenance** .....4  
**Parts Diagram** .....6  
**Parts List** .....7

**TABLE OF ILLUSTRATIONS**

**Figure 1** - Back Support Position .....4  
**Figure 2** - Fitting Cross Member Into Stop Channel .....4  
**Figure 3** - Leg Height Adjustment .....4  
**Figure 4** - Parts Diagram .....6

## **PURPOSE:**

Aseptico ADC-08-RED Portable Operator Stools provide seating for a doctor or an assistant during field dentistry and medical treatment. The padded seats and backrests make these stools comfortable for extended use, while the folding design and light weight ensure maximum portability. The ADC-08-RED Stools are built with high strength steel frames and rugged vinyl coverings, allowing for long term use.

## **PERFORMANCE CHARACTERISTICS:**

### **Dimensions**

Stool- Folded: 19" x 20" x 8.5"

Extended: 22" x 20" x (Max Height: 32" Min Height: 29")

Soft carrying case: 19" x 21" x 9"

### **Weight**

One (1) stool only: 14 lbs.

One (1) stool in soft carrying case: 16.5 lbs.

Maximum Load Capacity: Approx. 300 lbs.

### **Range of Positions**

Minimum Seat Height: 19"

Maximum Seat Height: 22"

## **ITEMS FURNISHED**

One (1) ADC-08-RED Portable Dental Stool

One (1) Soft padded carrying case with handles

One (1) Operation and Maintenance Manual

## STOOL SET-UP:

1. Remove the stool from its carrying case and swivel the back support to the upright position. (Fig. 1)
2. Turn the ADC-08 Stool upside down and set on the edge of an elevated flat surface such as a table or counter top. Scissor the leg frame so that the frame cross member lines up with the stop channel at the rear of the stool on the underside. Fit the frame cross member into the channel and push firmly into place (Fig. 2). Wrap restraining strap over the top of the cross member and snap into place. Ensure that the strap retains the frame cross member firmly into the stop channel.
3. Extend the legs to the proper height by pulling the adjustable legs out of the frame. The adjustable legs are marked with a red height indicating dot. Pull the leg out until the red dot is just exposed and rotate until red dot is in line with the holes in the frame tube. The spring loaded adjustment pin should then pop through the frame hole and lock leg into place. (Fig. 3) Repeat for all other legs.
4. Once you have set the legs to the proper height, turn the ADC-08 Stool upright and set on a hard, flat surface for use.

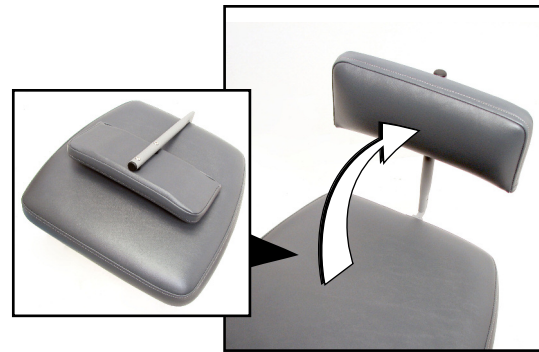


Figure 1 - Backrest Positioning

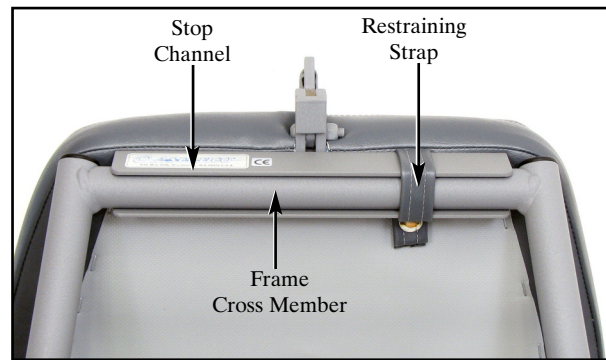


Figure 2 - Securing Leg Frame

### WARNING

**MAKE SURE ALL LEGS ARE EXTENDED TO THE SAME HEIGHT.**

**NEVER SIT ON THE EDGE OF THE SITTING SURFACE. ALWAYS SIT IN THE CENTER OF THE SEAT.**



## COLLAPSING THE STOOL:

Reverse the set-up procedure to collapse stool for packing. When collapsing the stool, depress spring loaded adjustment pin and turn adjustable leg 90 degrees before pushing leg into frame. This will prevent the legs from stopping at every adjustment interval.

## CLEANING AND MAINTENANCE:

Although bleach, when diluted to <10% and wiped clean immediately could be used, it is not recommended. The use of barrier covers and mild cleaning solutions is recommended as the primary asepsis approach on chair and stool upholstery instead of relying on chemicals. The use of barriers greatly extends the life of chair and stool upholstery and can be replaced between patients.

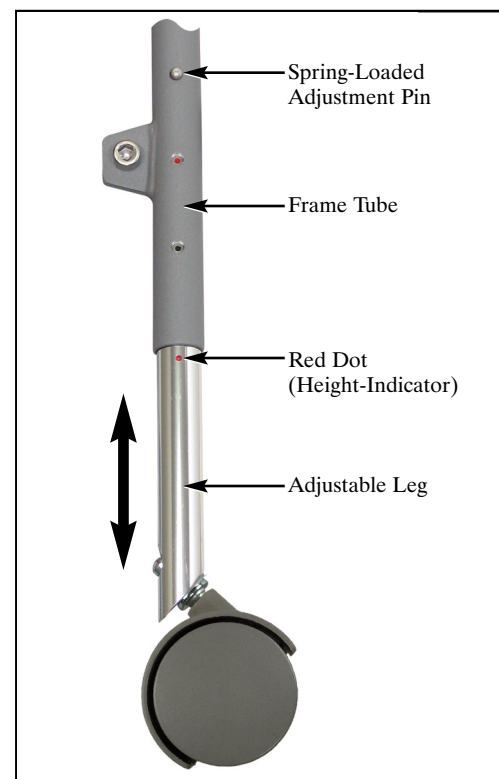
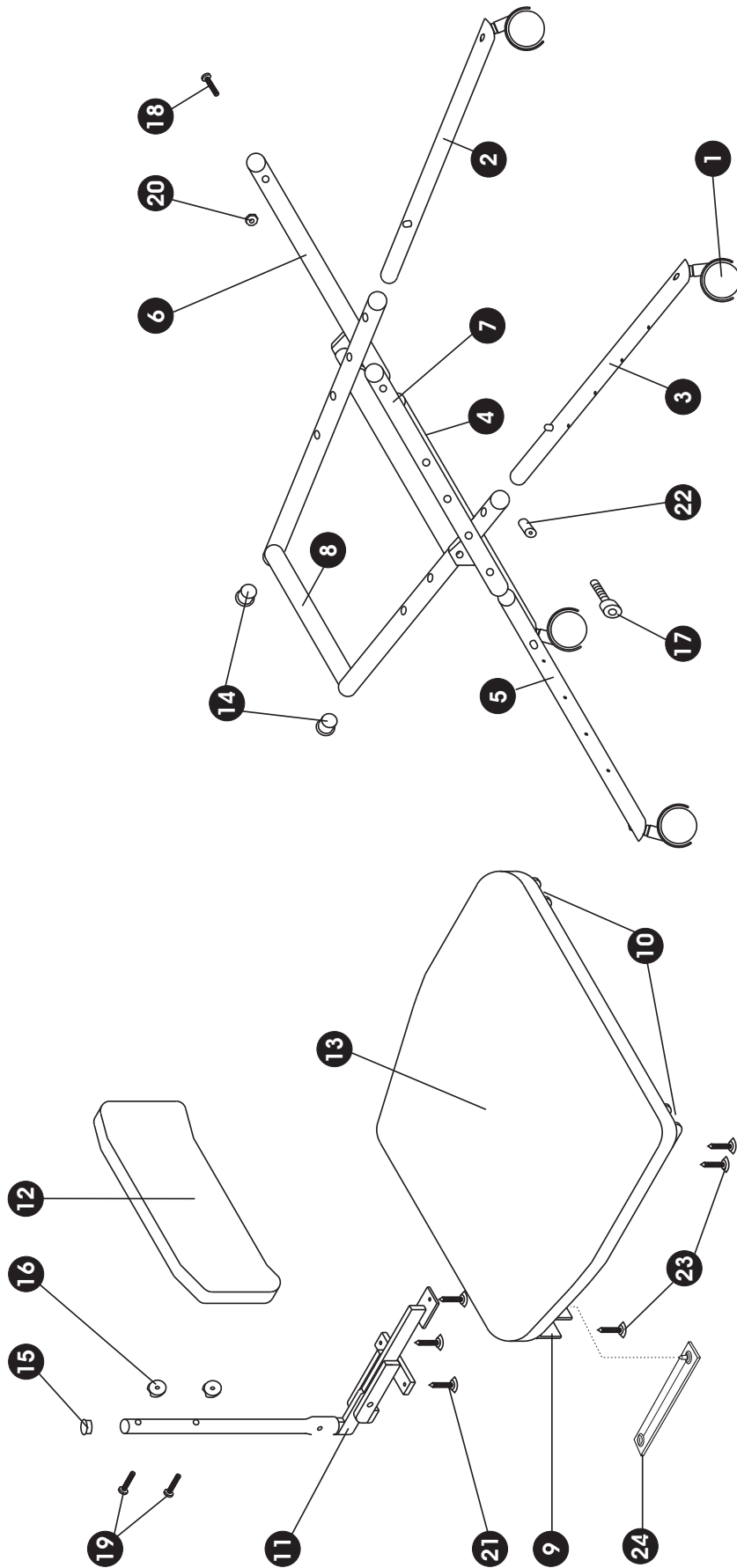


Figure 3 - Leg Height Adjustment

**NOTES**

A series of horizontal dashed lines intended for writing notes.



**PARTS DIAGRAM**  
**Aseptico ADC-08-RED**  
**Portable Dental Stool**

## PARTS LIST

	Item	Part Number	Quantity
1	Caster, 2" dual wheel	730210	4
2	Adj. Leg Assy, inside L	330265	1
3	Adj. Leg Assy, inside R	330266	1
4	Adj. Leg Assy, outside L	330267	1
5	Adj. Leg Assy, outside R	330268	1
6	Leg, outside L	460834-08	1
7	Leg, outside R	460835-08	1
8	Leg Assy, inside	330269-08	1
9	Leg stop	460432-08	1
10	Hinge, seat to leg	460829-08	2
11	Back Support Assy	330080	1
12	Backrest Cushion Assy, ADC-08-RED	330580	1
13	Seat Cushion Assy, ADC-08-RED	330581	1
14	Endcap, 1"O.D. black	510204	2
15	Plug, 3/4" hole	510263	1
16	Spacer, .750 O.D. coved	510261	2
17	C/S, SocHd 3/8-16x1 3/4" S/S	510725	2
18	C/S, 1/4-20x2 1/4" BtnSoc S/S	510440	2
19	C/S, 1/4-20x1 1/4" BtnSoc S/S	510295	2
20	Nut, 1/4-20 nyloc S/S	510296	3
21	Woodscrew, #10x1" flthd	510264	3
22	Spacer, 0.615"O.D.x1.0L Al	460894-08	2
23	C/S, 10-32x1" Flthd Soc S/S	510439	8
24	Retaining Strap, ADC-08-RED	461962	1
Not Shown	Case, grey carrying	410093	1

## **WARRANTY**

Aseptico warrants its products against defects in material or workmanship for a period of two (2) years, from date of original invoice. Some handpieces are warranted for one year under the same conditions. Other handpieces and expendable components, such as air turbines and light bulbs, are covered by shorter warranty periods, or have no warranty. Aseptico's sole obligation under product warranty is (at its sole option and discretion) to repair or replace any defective component or product in part or whole. Aseptico shall be the sole arbiter of such action.

In the event of alleged defect under warranty, the purchaser is to notify Aseptico's Customer Service Department promptly. Customer Service will provide instructions, usually directing that the product be returned for service. Shipment to Aseptico and the cost thereof is always the responsibility of the purchaser.

Accidental misuse, inappropriate installation, or failure to perform directed maintenance voids the warranty.

Aseptico does not assume, under this warranty, any risks or liabilities arising from the clinical use of its products, whether or not such use involves coincidental utilization of products manufactured by others.



*P.O. Box 1548 • Woodinville, WA 98072-1548  
1-800-426-5913 • 425-487-3157 • Fax: 360-668-8722  
email: [info@aseptico.com](mailto:info@aseptico.com) • Internet: [www.aseptico.com](http://www.aseptico.com)*